

Yoga Pro 7i (14", 9)

Unleash your power.

There's no rest for the powerful Lenovo Yoga Pro 7i, running on formidable performance from up to the latest Intel® Core™ Ultra 7 processors to unlock new AI possibilities. The creator-level 14.5" 3K PureSight Pro display produces exacting colors for true-to-life imagery. And with up to NVIDIA® GeForce RTX™ 4050 Series graphics - it's everything you need for a creative studio.



Unlock new AI experiences

Unlock new AI experiences and tackle the most demanding tasks effortlessly with up to the latest Intel® Core™ Ultra 7 processors boosted by Lenovo X Power. With a new dedicated AI engine, it scales up CPU and GPU performance to its optimum without devouring battery life or overheating the device. By moving airflow over essential hardware, the new and improved thermal system of supports up to 78W TDP of power in an ultra-thin design.



Treats your eyes to perfection

Your creativity is on full display with the 14.5" up to 3K PureSight Pro screen. Whether you're watching a gripping movie or poring over architectural designs, Microsoft Auto Color Management (ACM) intelligently toggles between 100% sRGB and P3 color gamuts - and combined with up to Delta E<1 color accuracy - ensures the best color quality possible.



Does whatever you dream

It's a dream come true with up to NVIDIA® GeForce RTX™ 4050 Series graphics. Whether you're creating intricate animations or broadcasting your gameplay, it unlocks maximum stability and massive speed boosts with NVIDIA® Studio. For more efficiency, opt to use the high performance Intel® Arc™ graphics for powerful and efficient creating, even while on-the-go.



Whispers suite everything

Take your work and creativity to the next level with Premium Suite. Submerge in full-bodied sound on four Dolby Atmos®-optimized speakers and be heard loud and clear through the quad noise-cancelling microphones. The Yoga Keyboard with an increased 1.5 mm travel delivers a comfortable typing experience.



Yoga Pro 7i (14", 9)

SPECIFICATIONS

Yoga Pro 7 14IMH9*

PERFORMANCE

Processor

Intel® Core™ Ultra 9 Processor 185H
Intel® Core™ Ultra 7 Processor 155H
Intel® Core™ Ultra 5 Processor 125H

Operating System

Windows 11

Graphics

UMA : Intel® ARC™ Graphics

DIS : NVIDIA® GeForce RTX™ 4060 Laptop GPU
8 GB GDDR6 VRAM (Up to 2010 MHz Boost Clock, Up to 60W TGP)

Memory

LPDDR5X : 16 GB / 32 GB; 7467 MHz Dual Channel

Storage

UMA

PCIe Gen 4 2280 M.2 : 512 GB / 1 TB

DIS

PCIe Gen 4 2242 M.2 : 1 TB

Camera & Microphone

FHD Super Resolution Webcam |
IR Camera + ToF | Camera Shutter |
4 Voice ID Microphones

Audio

4 x Speakers | Dolby Atmos® Audio

Battery¹ (73Whr)

Play Movie : Up to 20.8 Hours @ 150 nits

MobileMark® 2025 : Up to 10.4 Hours @ 200 nits

Battclues 2.0 : Up to 7.8 Hours @ 250 nits

Rapid Charge Express / Rapid Charge Pro

DESIGN

Display

14.5" 3K (3072 x 1920) 120 Hz, 16:10,
PureSight Pro IPS, 400 nits, Delta E<1,
100% sRGB, 100% P3, TÜV Low Blue Light
Certification, Eyesafe Certification,
Glass Touch

14.5" 2.8K (2880 x 1800) 120 Hz, 16:10,
E4 OLED, 400 nits, Delta E<1 (TBD),
100% sRGB, 100% P3, VESA Certified
DisplayHDR™ True Black 500,
TÜV Low Blue Light Certification,
Eyesafe Certification, Glass

14.5" 2.5K (2560 x 1600) 90 Hz, 16:10, IPS,
350 nits, 100% sRGB, TÜV Low Blue Light
Certification, Eyesafe Certification, Matte

Dimensions (W x D x H)²

(mm) : 325.5 x 226.49 x as thin as 15.6

(inches) : 12.81" x 8.92" x as thin as 0.61"

Weight

Starting at 1.49 kg (3.28 lbs)

Hinge

180°

Colors

Tidal Teal
Luna Grey



CONNECTIVITY

WLAN

WiFi 6E

Bluetooth³

Bluetooth® 5.3³

Input/Output (I/O) Ports

Left

1 x USB Type-C™ Intel® Thunderbolt™ 4

1 x USB Type-C™ Full Function
(USB 3.2 Gen 2⁴, PD 3.0, DP 1.4)

1 x HDMI™ 2.1 (6 Gbps, up to 4K/60 Hz)

Right

1 x USB-A 3.2 Gen 1⁴ (Always-On)

1 x Audio Combo Jack

PRELOADED SOFTWARE

- Windows 11 Home/Pro
- Creator Zone (OTA Update)
- Lenovo Vantage
- Microsoft 365 Trial
- McAfee® LiveSafe™
- Amazon Alexa
- Dolby® Access (Dolby Vision® and Atmos®)

NOTEABLE MENTIONS

- Plastic-free Packaging
- EPEAT® Gold-registered⁵
- 50% Recycled Aluminum in the Bottom Cover
- 100% FSC-certified⁶ Packaging Boxes
- ENERGY STAR® rated



With Lenovo
AI Engine+



LENOVO SERVICES

Lenovo Premium Care Plus

Lenovo Premium Care Plus is the ultimate PC support experience with you as our priority 24/7. Enjoy personalized hardware and software support from a global network of elite technicians, along with accidental damage protection, fast repairs with onsite support, extended battery warranty, data migration assistance, and smart performance solutions that optimize PC performance and security.

Lenovo Smart Performance

Smart Performance Services within Lenovo Vantage will keep your system running at optimum performance and proactively fix issues that affect PC performance, internet performance, remove malware, and improve device security.

Lenovo Accidental Damage Protection

Avoid the hassles of unexpected damage & repair costs. With coverage for drops, spills, electric surges, and broken LCD screens, accidental damage protection makes it easy to repair to your PCs and ensures your device is up and running fast.

Lenovo CO₂ Offset Services

Offset the carbon emissions of your PC with Lenovo CO₂ Offset Services – an easy and transparent solution to offset emissions across the average lifecycle of your device. These offsets are invested in UN-approved initiatives like renewable energy or ecological projects, thus contributing towards a more sustainable future.

Lenovo Sealed Battery Warranty

Long-lasting battery life is not just a feature but a necessity to help you stay productive and connected all day long. Protect your PC's sealed battery from degradation, enjoy hassle-free battery replacement service, and safeguard your PC from future battery failure with our Sealed Battery Warranty Service.

Lenovo Warranty Extensions (Up to 3 Years Duration)

Gain complete peace of mind by extending your base warranty to up to 3 years and minimize unexpected repair costs.

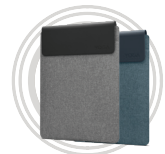
OPTIONS & ACCESSORIES



Lenovo Yoga True Wireless Stereo Earbuds



Lenovo Yoga Pro Mouse



Lenovo Yoga Sleeves

McAfee® LiveSafe™

Register McAfee® to enjoy these benefits in your FREE 30-day trial.

- Award-winning Antivirus
- Password Manager
- Safe Web Browsing
- Multi-device Compatibility
- Identity Theft Protection
- Free Customer Support

* Example of Lenovo catalogue naming convention



Intel® platform codes

Gemini Lake: **IGM**, Whiskey Lake: **IWL**, Ice Lake: **ILL**, Gemini Lake: **IGL**, Comet Lake: **IML**, Tiger Lake: **ITL**, Alder Lake: **IAP**, Alder Lake-HX: **IAX**, Alder Lake-U15: **IAU**, Alder Lake-P28: **IAP**, Alder Lake-P28/U15: **IAL**, Alder Lake-H45: **IAH**, Alder Lake N: **IAN**, Raptor Lake-PX: **IRP**, Raptor Lake-H: **IRH**, Raptor Lake-HX: **IRX**, Alder Lake-M U9: **IAM**, Raptor Lake U: **IRU**, Meteor Lake-P: **IMP**, Raptor Lake-P: **IRP**, Raptor Lake-B: **IRB**, Raptor Lake-P28/U15: **IRL**, Raptor Lake-B: **IRZ**, Meteor Lake-H: **IMH**.

WWW.LENOVO.COM

Lenovo reserves the right to alter product offerings and specifications at any time, without notice. Lenovo makes every effort to ensure accuracy of all information but is not liable or responsible for any editorial, photographic or typographic errors. All images are for illustration purposes only. For full Lenovo product, service and warranty specifications visit www.lenovo.com. Lenovo makes no representations or warranties regarding third party products or services. **Trademarks:** The following are trademarks or registered trademarks of Lenovo: Lenovo, the Lenovo logo, ideapad, IdeaCentre, yoga and yoga home. Microsoft, Windows and Vista are registered trademarks of Microsoft Corporation. Intel, the Intel logo, Intel Inside, Intel Core, and Core Inside are trademarks of Intel Corporation in the U.S. and/or other countries. Other company, product and service names may be trademarks or service marks of others. Visit www.lenovo.com/lenovo/us/en/safecomp/ periodically for the latest information on safe and effective computing. ©2024 Lenovo. All rights reserved.



Lenovo